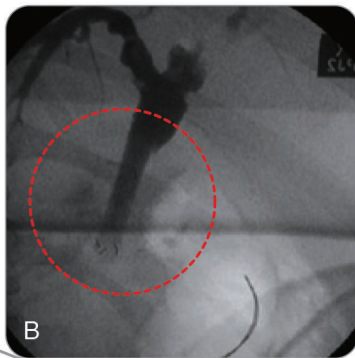
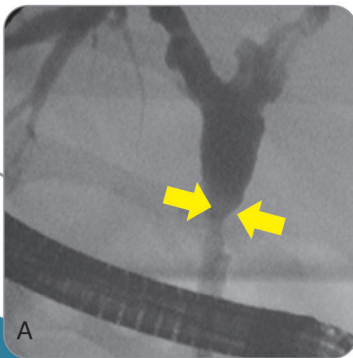
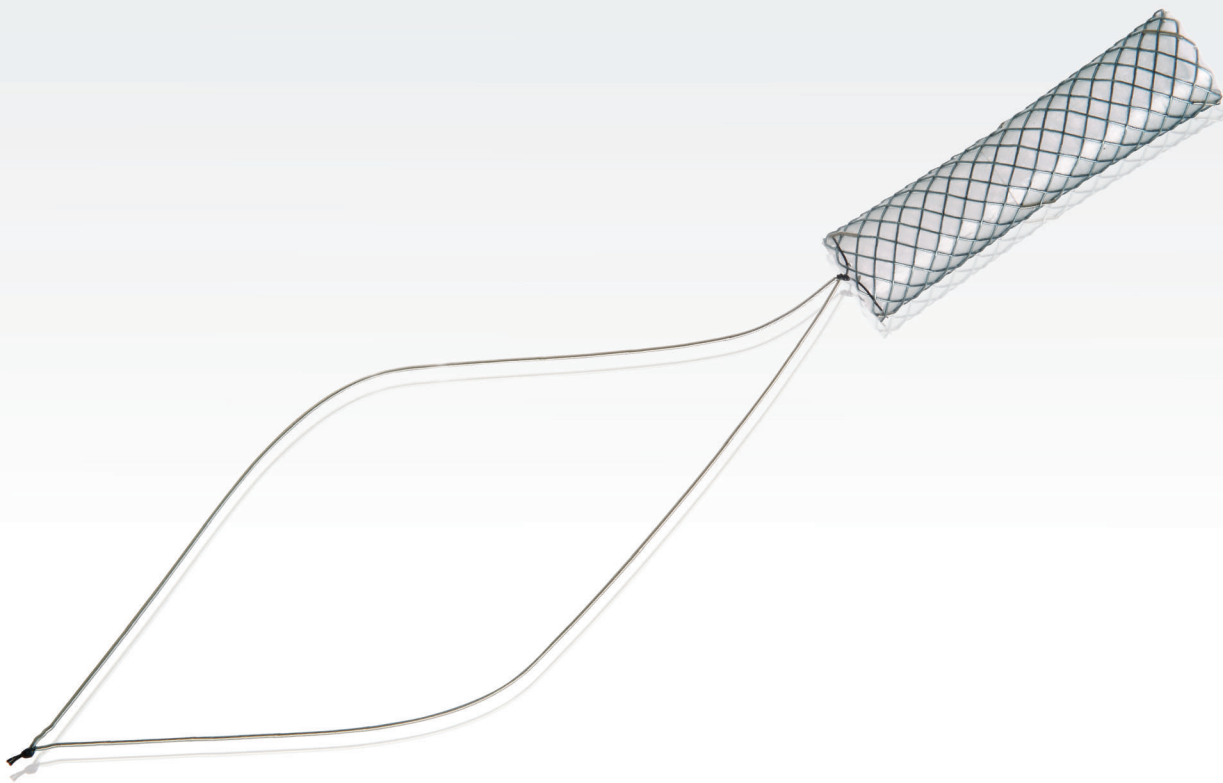


# KAFFES™ Biliary Stent



*"Prototype RCSEMS (Kaffes™) has shown no migration, easy insertability and removability with excellent stricture resolution at the end of the treatment and during medium term follow-up."*

- ◀ A. Stricture at mid-common bile duct
- B. Deployed Kaffes™ stent with radiopaque string extending into the duodenum

by Hoi-Poh Tee et al [World J Gastroenterol. 2010 Jul 28;16(28):3597-600]

# Niti-S™ Kaffes™ Biliary Stent

for anastomotic strictures after liver transplantation

## ● Feature

- Characteristic waist at mid-portion of the stent : Waist shape of the stent allows strong radial force and preventing migration
- Short length of stent : Using a short stent across the stricture prevents to impart pressure over a large area of normal duct by reducing the potential risk of necrosis and fibrosis
- Long platinum radio-paquet retrieval string : The long platinum string helps easy removal from the high up location of CBD
- Radiopaque marker : 3(three) at both ends & 2(two) in the middle



## ● Ordering Information

Endoscopic Approach					Percutaneous Approach				
Code	Stent		Delivery		Code	Stent		Delivery	
	Diameter (mm)	Length (cm)	Profile (Fr)	Usable Length (cm)		Diameter (mm)	Length (cm)	Profile (Fr)	Usable Length (cm)
BS0604F2	6	4	8.5	180	TS0604F2	6	4	8.5	50
BS0605F2		5			TS0605F2		5		
BS0606F2		6			TS0606F2		6		
BS0607F2		7			TS0607F2		7		
BS0608F2		8			TS0608F2		8		
BS0804F2	8	4	9		TS0804F2	8	4	9	
BS0805F2		5			TS0805F2		5		
BS0806F2		6			TS0806F2		6		
BS0807F2		7			TS0807F2		7		
BS0808F2		8			TS0808F2		8		
BS1004F2	10	4	9		TS1004F2	10	4	9	
BS1005F2		5			TS1005F2		5		
BS1006F2		6			TS1006F2		6		
BS1007F2		7			TS1007F2		7		
BS1008F2		8			TS1008F2		8		

## Released Articles

\* *A randomized trial of a fully covered self-expandable metallic stent versus plastic stents in anastomotic biliary strictures after liver transplantation*  
by Arthur Kaffes et al [Therap Adv Gastroenterol. 2014 Mar;7(2):64-71]

\* *Fully covered self-expandable metal stents for treatment of benign biliary strictures*  
by Arthur J. Kaffes et al [Gastrointest Endosc. 2013 Jul;78(1):13-21. doi: 10.1016]

\* *Placement of removable metal biliary stent in post-orthotopic liver transplantation anastomotic stricture*  
by Hoi-Poh Tee et al [World J Gastroenterol. 2010 Jul 28;16(28):3597-600]

