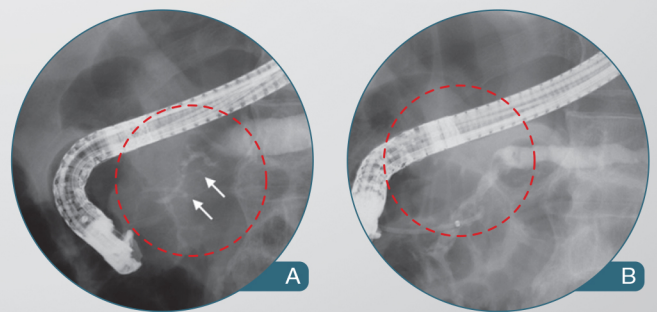


BUMPY™ Biliary/Pancreatic Stent



A. Tight pancreatic duct stricture in the pancreatic head
B. After 3month, Resolution of the pancreatic duct stricture

by Sung-Hoon Moon, MD et al [Gastrointest Endosc. 2010 Jul;72(1):86-91]

HEAD OFFICE

14, Gojeong-ro, Wolgot-myeon, Gimpo-si, Gyeonggi-do, Korea 10022

SALES OFFICE

Bldg.C 4F, 158 Haneulmaeul-ro, Ilsandong-gu, Goyang-si, Gyeonggi-do, Korea 10355
E: contact@stent.net T: +82 31 904 6153 F: +82 31 904 6157

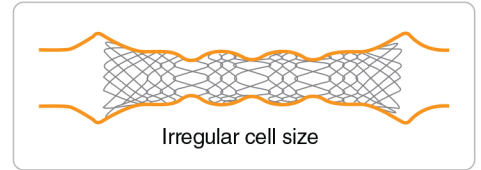
www.taewoongmedical.com

Niti-S™ BUMPY™ Biliary/Pancreatic Stent

for benign biliary and pancreatic strictures

Features

- **Safety:** Irregular cell sizes of segmental radial force does not completely compress the side branches for preventing stent related pancreatic sepsis or pancreatitis
- **Easy removal:** Fully PTFE (body portion) and silicone (both flared ends) covered design along with removal string at the proximal end of the stent lead to easy removal
- **Antimigration:** Both flared ends prevent the risk of migration
- **Radiopaque marker:** 3 (three) at both ends & 2 (two) in the middle



Ordering Information

Endoscopic Approach					Percutaneous Approach										
Code	Stent		Delivery		Code	Stent		Delivery							
	Diameter (mm)	Length (cm)	Profile (fr)	Usable Length (cm)		Diameter (mm)	Length (cm)	Profile (fr)	Usable Length (cm)						
BK0604CW	6	4	8.5	180	TK0604CW	6	4	8.5	50						
BK0605CW		5			TK0605CW		5								
BK0606CW		6			TK0606CW		6								
BK0607CW		7			TK0607CW		7								
BK0608CW		8			TK0608CW		8								
BK0609CW		9			TK0609CW		9								
BK0610CW		10			TK0610CW		10								
BK0612CW		12			TK0612CW		12								
BK0804CW		8			4		8.5			180	TK0804CW	8	4	8.5	50
BK0805CW					5						TK0805CW		5		
BK0806CW	6		TK0806CW	6											
BK0807CW	7		TK0807CW	7											
BK0808CW	8		TK0808CW	8											
BK0809CW	9		TK0809CW	9											
BK0810CW	10		TK0810CW	10											
BK0812CW	12		TK0812CW	12											
BK1004CW	10	4	8.5	180	TK1004CW	10	4	8.5	50						
BK1005CW		5			TK1005CW		5								
BK1006CW		6			TK1006CW		6								
BK1007CW		7			TK1007CW		7								
BK1008CW		8			TK1008CW		8								
BK1009CW		9			TK1009CW		9								
BK1010CW		10			TK1010CW		10								
BK1012CW		12			TK1012CW		12								

Released Article

- * Fully covered self-expandable metallic stents in benign biliary strictures: A multicenter study on efficacy and safety by I. Tarantino et al [Endoscopy. 2012 Oct;44(10):923-7]
- * Modified fully covered self-expandable metal stents with antimigration features for benign pancreatic-duct strictures in advanced chronic pancreatitis, with a focus on the safety profile and reducing migration by Sung-Hoon Moon, MD et al [Gastrointest Endosc. 2010 Jul;72(1):86-91]
- * Feasibility and safety of placement of a newly designed, fully covered self-expandable metal stent for refractory benign pancreatic ductal strictures: a pilot study by Do Hyun Park, MD, PhD et al [Gastrointest Endosc. 2008 Dec;68(6):1182-9. doi: 10.1016]