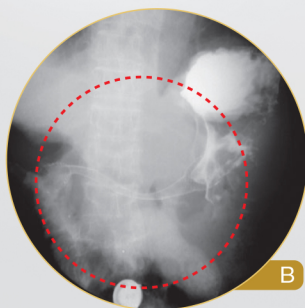
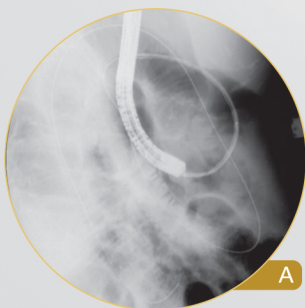
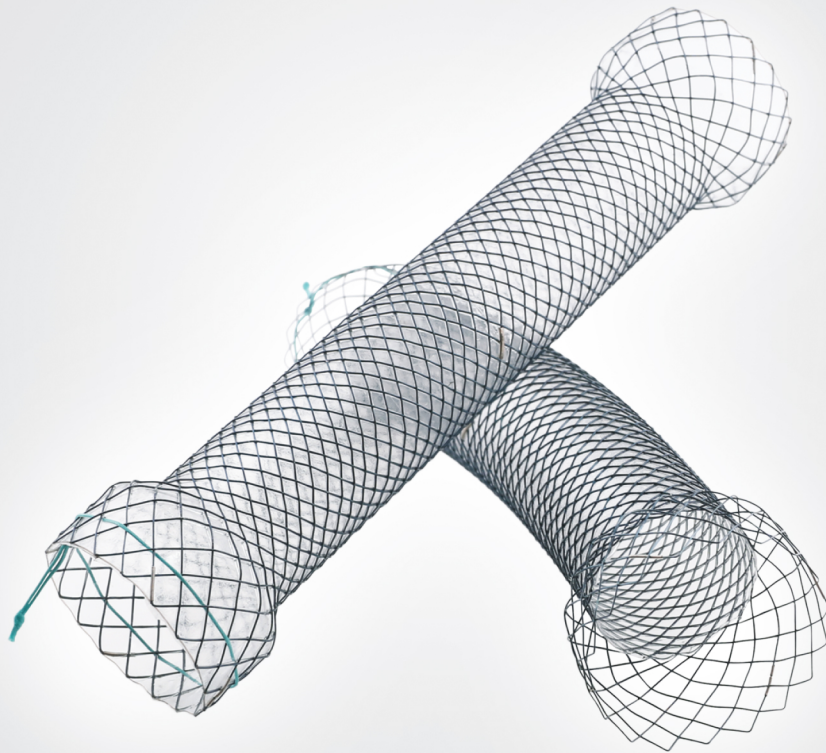


# Pyloric/Duodenal Stent



**A.** Self-expandable metal stent was passed over the guidewire through the forceps channel of the endoscope, and placed at the mid-portion of the stenosis

**B.** The catheter was removed slowly and the stent was expanded

by Eun H Seo et al [J Gastroenterol Hepatol. 2008 Jul;23(7Pt1):1056-62]

#### HEAD OFFICE

14, Gojeong-ro, Wolgot-myeon, Gimpo-si, Gyeonggi-do, Korea 10022

#### SALES OFFICE

Bldg.C 4F, 158 Haneulmaeul-ro, ilsandong-gu, Goyang-si, Gyeonggi-do, Korea 10355  
E: contact@stent.net T: +82 31 904 6153 F: +82 31 904 6157

[www.taewoongmedical.com](http://www.taewoongmedical.com)

# Niti-S™ S Pyloric/Duodenal Stent

for benign and malignant gastric outlet obstruction



## Features

- Fixed cell with braided construction
  - High flexibility and optimal radial force
- Silicone covering and soft round ends
  - Reduce tissue ingrowth and hyperplasia reaction
- Visible green suture for easy removal
- Radiopaque marker: 4 (four) at both ends & 2 (two) in the middle

## Ordering Information

### OTW (Over The Wire)

Product	Code	Stent		Delivery	
		Diameter (mm)	Length (cm)	Profile (Fr)	Usable length (cm)
Fully covered	PS**_F	18, 20	6, 8, 10, 12, 14, 15	16	135
		22		20	
		24, 26, 28		22	
Both ends bare	PS**_B	18, 20	6, 8, 10, 12, 14, 15	16	
		22		20	
		24, 26, 28		22	
Distal end bare	PS**_H	18, 20	6, 8, 10, 12, 14, 15	16	
		22		20	
		24, 26, 28		22	

### TTS (Through The Scope)

Product	Code	Stent		Delivery	
		Diameter (mm)	Length (cm)	Profile (Fr)	Usable length (cm)
Fully covered	PST**_F	18, 20	6, 8, 10, 12, 14, 15	10.5	180
Both ends bare	PST**_B				
Distal end bare	PST**_H				

\* Available 220cm delivery system [Coding: PST\*\*\_F-22]

## Released Article

\* Covered expandable nitinol stents for malignant gastroduodenal obstructions  
by Eun H Seo et al [J Gastroenterol Hepatol. 2008 Jul;23(7Pt1):1056-62]