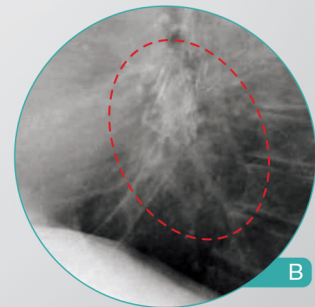
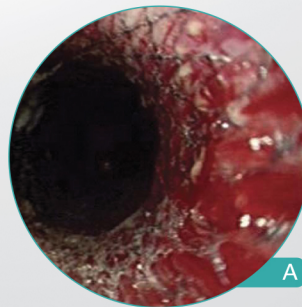
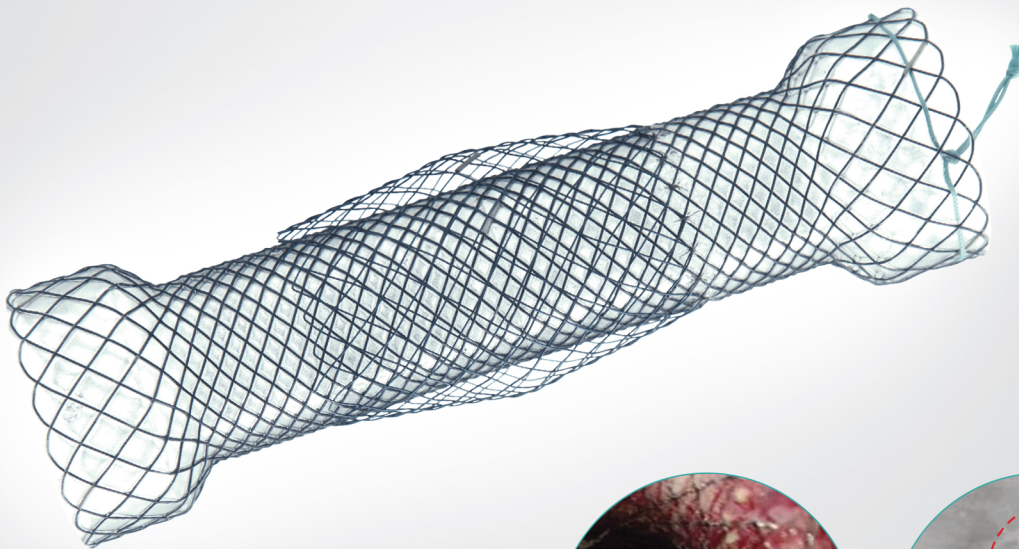


DOUBLE™ Esophageal Stent



"Its double-layered design is probably important in preventing migration. In addition, the complete covering of the Niti-S stent may be a factor in preventing tissue overgrowth at both ends of the stent."

A. Endoscopic view inside the Niti-S DOUBLE™ stent

B. The Niti-S DOUBLE™ stent is positioned partially in the esophagus and expanding below the diaphragm

[Gastrointest Endosc. 2006 Jan;63(1):134-40]

HEAD OFFICE

14, Gojeong-ro, Wolgot-myeon, Gimpo-si, Gyeonggi-do, Korea 10022

SALES OFFICE

Bldg.C 4F, 158 Haneulmaeul-ro, ilsandong-gu, Goyang-si, Gyeonggi-do, Korea 10355

E: contact@stent.net T: +82 31 904 6153 F: +82 31 904 6157

www.taewoongmedical.com

Niti-S™ **DOUBLE**™ Esophageal Stent

for malignant esophageal strictures

Features

- Double layered design
 - Silicone full covering prevents the risk of tumor ingrowth
 - Additional uncovered outer mesh helps to resist migration
- Retrieval string at proximal end helps repositioning
- Radiopaque marker: 4 (four) at both ends & 2 (two) in the middle

Ordering Information

Distal Release				
Code	Stent		Delivery	
	Diameter (mm)	Length (cm)	Profile (Fr)	Usable Length (cm)
ES1606FD	16	6	18	70
ES1608FD		8		
ES1610FD		10		
ES1612FD		12		
ES1614FD		14		
ES1615FD		15		
ES1806FD	18	6	18	
ES1808FD		8		
ES1810FD		10		
ES1812FD		12		
ES1814FD		14		
ES1815FD		15		
ES2006FD	20	6	20	
ES2008FD		8		
ES2010FD		10		
ES2012FD		12		
ES2014FD		14		
ES2015FD		15		
ES2206FD	22	6	22	
ES2208FD		8		
ES2210FD		10		
ES2212FD		12		
ES2214FD		14		
ES2215FD		15		
ES2406FD	24	6	22	
ES2408FD		8		
ES2410FD		10		
ES2412FD		12		
ES2414FD		14		
ES2415FD		15		
ES2806FD	28	6	22	
ES2808FD		8		
ES2810FD		10		
ES2812FD		12		
ES2814FD		14		
ES2815FD		15		

Proximal Release				
Code	Stent		Delivery	
	Diameter (mm)	Length (cm)	Profile (Fr)	Usable Length (cm)
ESP1606FD	16	6	18	70
ESP1608FD		8		
ESP1610FD		10		
ESP1612FD		12		
ESP1614FD		14		
ESP1615FD		15		
ESP1806FD	18	6	18	
ESP1808FD		8		
ESP1810FD		10		
ESP1812FD		12		
ESP1814FD		14		
ESP1815FD		15		
ESP2006FD	20	6	20	
ESP2008FD		8		
ESP2010FD		10		
ESP2012FD		12		
ESP2014FD		14		
ESP2015FD		15		
ESP2206FD	22	6	22	
ESP2208FD		8		
ESP2210FD		10		
ESP2212FD		12		
ESP2214FD		14		
ESP2215FD		15		
ESP2406FD	24	6	22	
ESP2408FD		8		
ESP2410FD		10		
ESP2412FD		12		
ESP2414FD		14		
ESP2415FD		15		
ESP2806FD	28	6	22	
ESP2808FD		8		
ESP2810FD		10		
ESP2812FD		12		
ESP2814FD		14		
ESP2815FD		15		

Released Article

- * Outcomes Following Oesophageal Stent Insertion for Palliation of Malignant Strictures: A Large Single Center Series
by Nicholas J. Battersby, BMedSc, MARCS et al [J Surg Oncol. 2012 Jan;105(1):60-5]
- * New Design Esophageal Stents for the Palliation of Dysphagia From Esophageal or Gastric Cardia Cancer: A Randomized Trial
by Els M.L. Verschuur, M.Sc et al [Am J Gastroenterol. 2008 Feb;103(2):304-12]
- * A new esophageal stent design (Niti-S stent) for the prevention of migration: a prospective study in 42 patients
by NICHOLAS J. BATTERSBY, BMedSc, MRCs et al [Gastrointest Endosc. 2006 Jan;63(1):134-40]